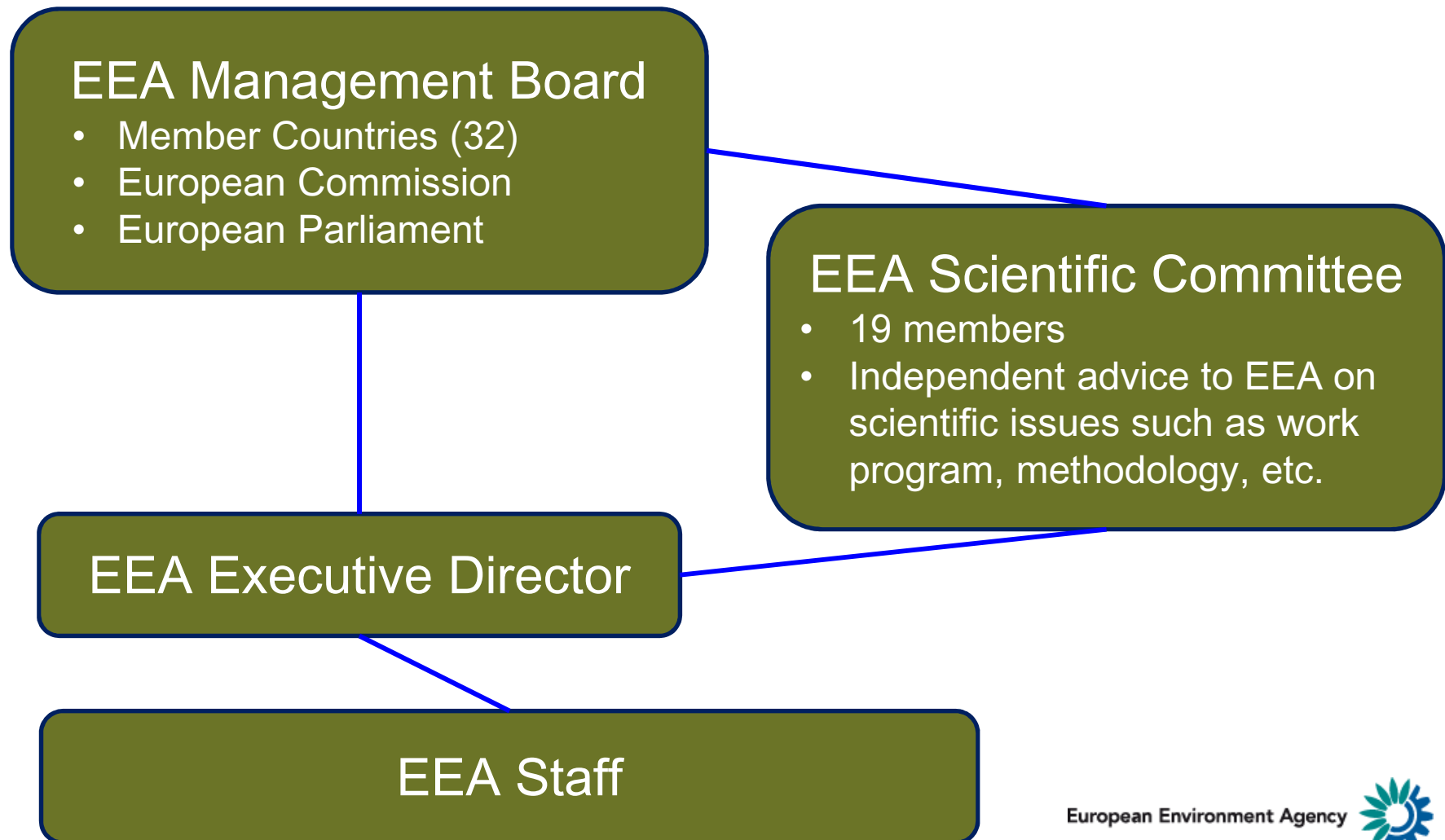


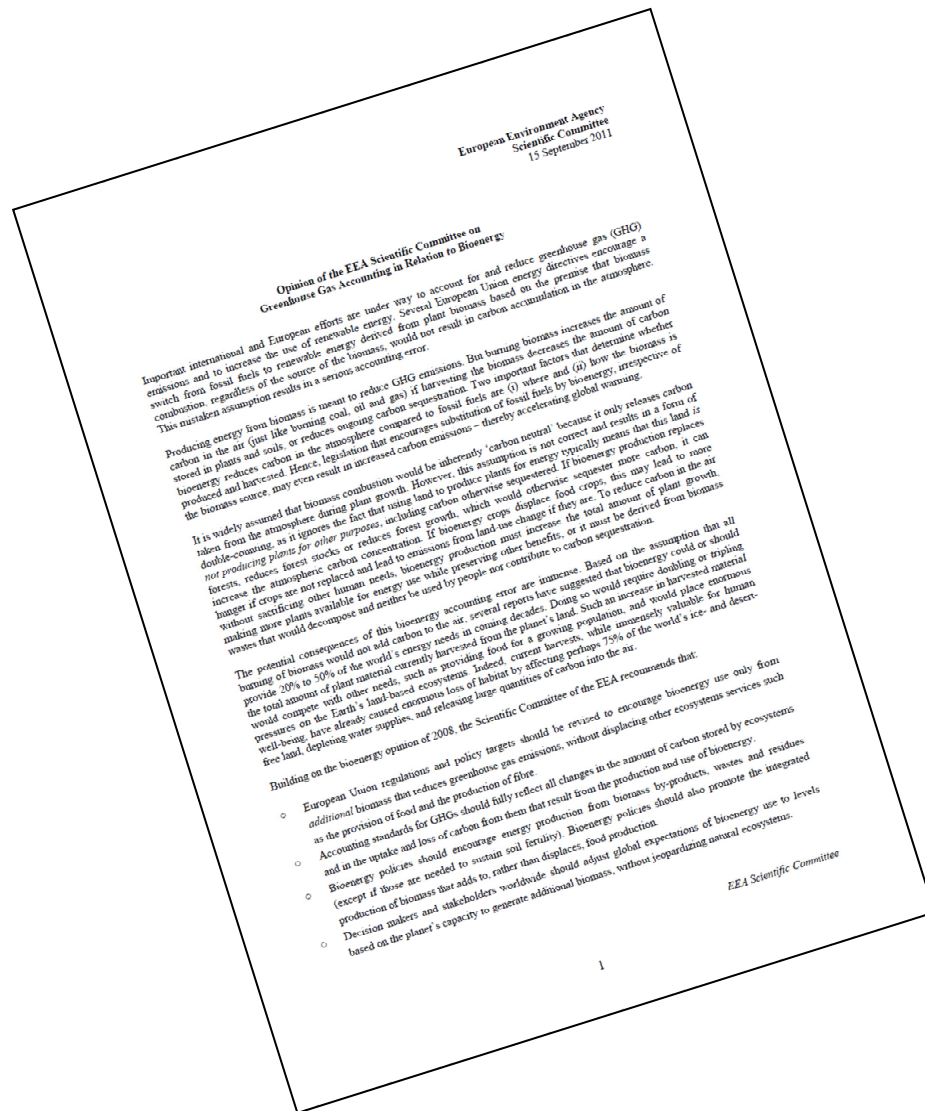
Revisiting the potentials in future scenarios for the use of bioenergy: Opinion of the EEA Scientific Committee on Greenhouse Gas Accounting in relation to Bioenergy

Peder Jensen, Ph.D
Gruppenleder Transport og Energi, EEA

Europæiske Miljøagentur



Greenhouse Gas Accounting and Bioenergy Opinion



Offentliggjort 15 September, 2011

Focus på opgørelsesprincipper for drivhusgasser i forbindelse med brug af bioenergi

Pressedækning (langt over 100 artikler)

Bioenergy Targets Based On Flawed Science, Report Shows

Date: 15-Sep-11
Country: BELGIUM
Author: Charlie Dunmore

Existing targets for biofuels and other forms of bioenergy are based on flawed carbon accounting and should be revised downwards, a draft report by a panel of 19 top European scientists showed. "It is widely assumed that bioenergy is inherently carbon-neutral -- however, the Scientific Committee of the European Environment Agency, the watchdog, said the potential consequences of accounting error are immense, Reuters...."

GREEN BIOFUEL 'MAKES CLIMATE CHANGE WORSE'

Friday September 30, 2011
By John Ingham, Environment Editor

A "GREEN" fuel hailed as an answer to climate change could make it worse, an EU committee warned yesterday. It said that EU legislation to encourage the use of biofuels, such as wood, ethanol or oils from crops risks "accelerating global warming". The report by the European Environment Agency Scientific Committee dismisses the widely-held view that burning biofuels is carbon neutral....

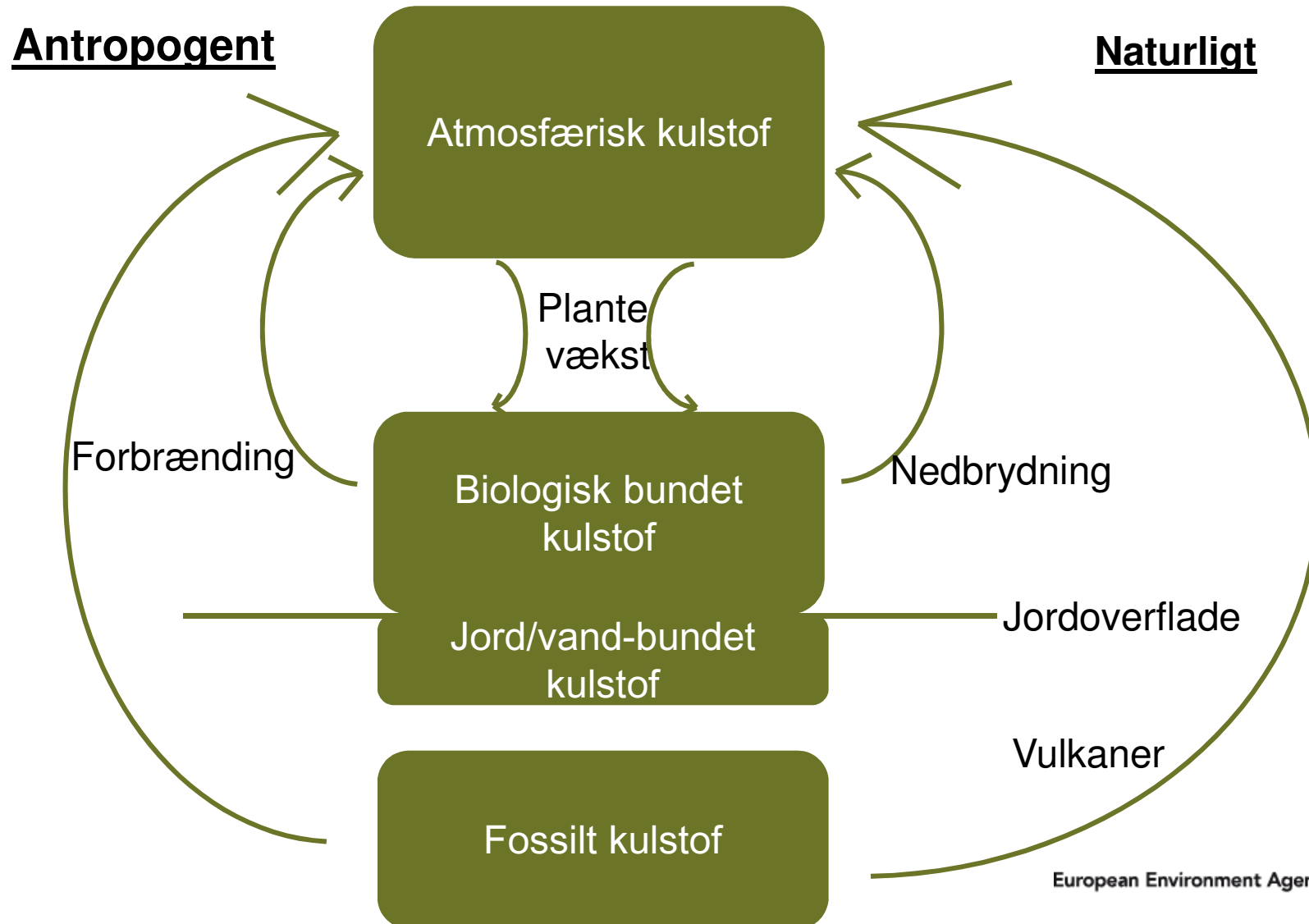
Bioenergy not always leading to CO2 emissions cuts

Alessandro Torello, Dow Jones Newswires
Updated: September 15, 2011

Fuels made out of biomass aren't always emitting fewer greenhouse gases than regular fossil fuels, top European scientists say in a draft study that is likely to add fire to an ongoing debate about the actual effectiveness of the so-called biofuels in cutting CO2 emissions from transport. "It is widely assumed that bioenergy is carbon neutral. However, this assumption is flawed as it means that using land to produce plants for other purposes, instead of for bioenergy, could actually lead to more CO2 emissions, Reuters...."

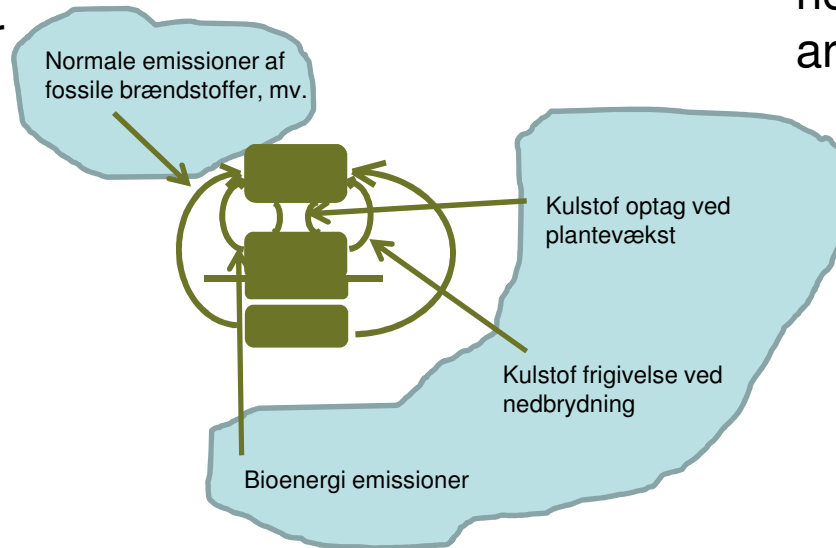


Simpelt kulstof kredsløb



UNFCCC opgørelsesprincip

Baseret på
aktivitetsdata og på
emissions faktorer



Baseret på opgørelse af
nettoændringer af
arealanvendelse

... This accounting system is complete and accurate ...

Men det kræver globale opgørelser hvor både aktivitets- og arealanvendelses-effekter opgøres

Praktisk lovgivning - kritikken

1. EU har tilstræbt globale aftaler om monitorering, afrapportering og verifikation (MRV), men der er stadig ikke global accept af dette krav.
2. Kyoto protokollen dækker kun en del af kloden og der er derfor 'gode' muligheder for 'kulstoflæklage', både via aktivitetsflytninger (embedded carbon perspektiv) og ændret arealanvendelse (ILUC perspektiv).
3. Modtrækket er bæredygtighedskriterier for, i første omgang, biobrændstoffer incl. estimat af areal anvendelses effekten.
4. En grundigere metode til håndtering af indirekte arealanvendelses-effekter er stadig under udarbejdelse.

Kritikken fra SC udtrykker ønske om 4 da 1 ikke ser ud til at være lige rundt om hjørnet.

SC anser 3 for at være for ringe en metode fordi presset på land resourcer er kraftigt stigende.

Thank you