



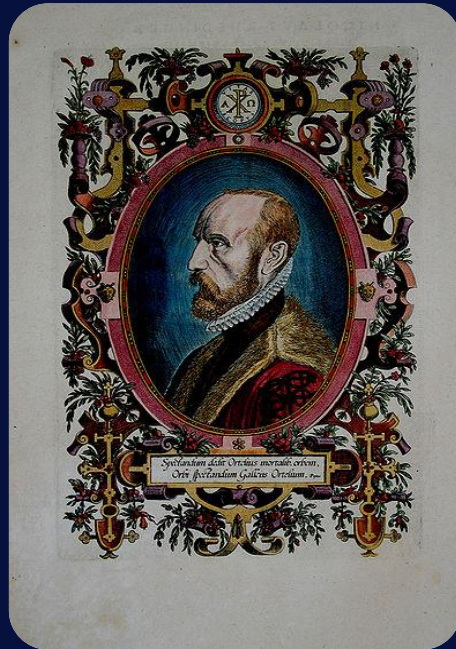
Digital Twin Technology

– a Versatile Database Approach

2019-11-01 Tove Nilstun



Abraham Ortelius
1527-1598



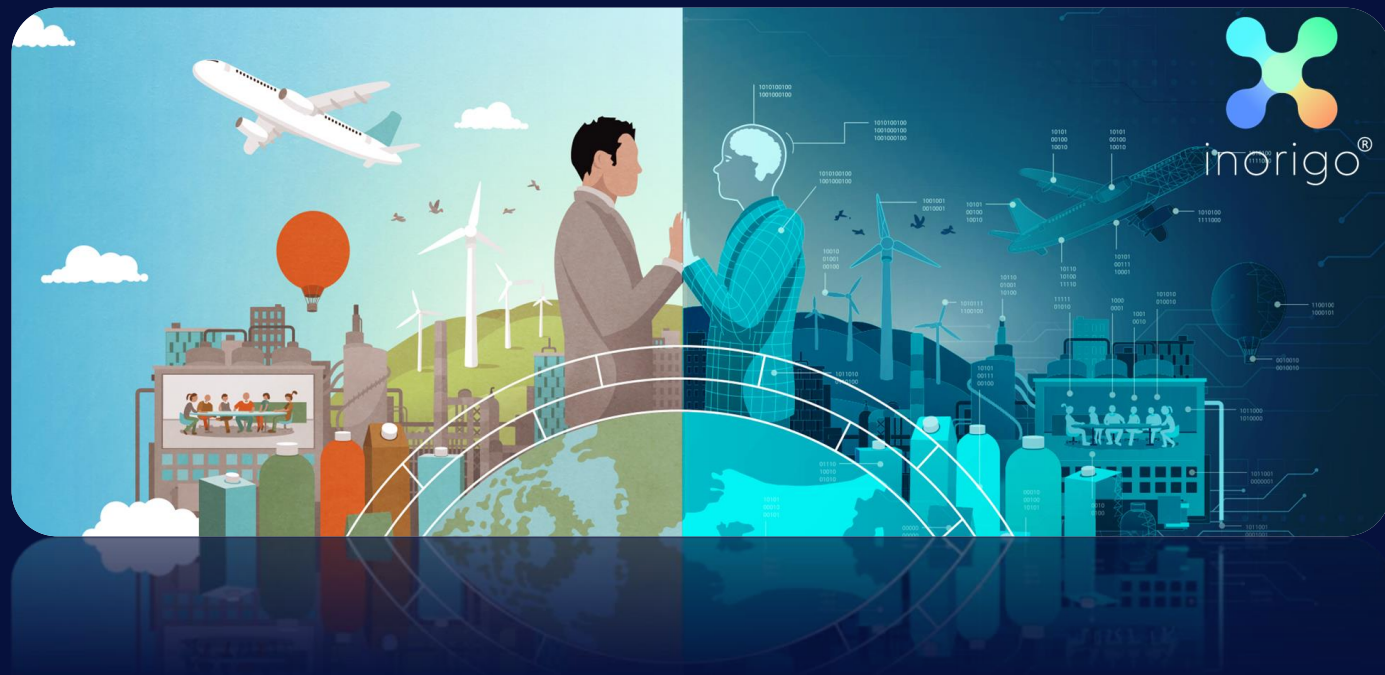
Theatrum Orbis Terrarum
1570-05-20



Ortelius AB
2000



Digital Twin of an Organization (DTO)



Digital Twin of an Organization

1. WHY do businesses need a DTO?
2. WHAT is a DTO?
3. HOW to create a DTO?

1. WHY a DTO?

To navigate the organization from its current position to the desired destination.



2. WHAT is a DTO?

- Model Component
- Measurement Component
- Data to populate the Model & Measurement Components





“It is not the strongest of the species that survives, nor the most intelligent, but the one most responsive to *change*.”

- Charles Darwin



“It is not the strongest of businesses that thrives, nor the most intelligent, but the one who successfully drives *change*.”

- Ortelius

The inorigo Platform

inorigo[®]
Versatile DB



Pantry



Breakfast



Pancakes



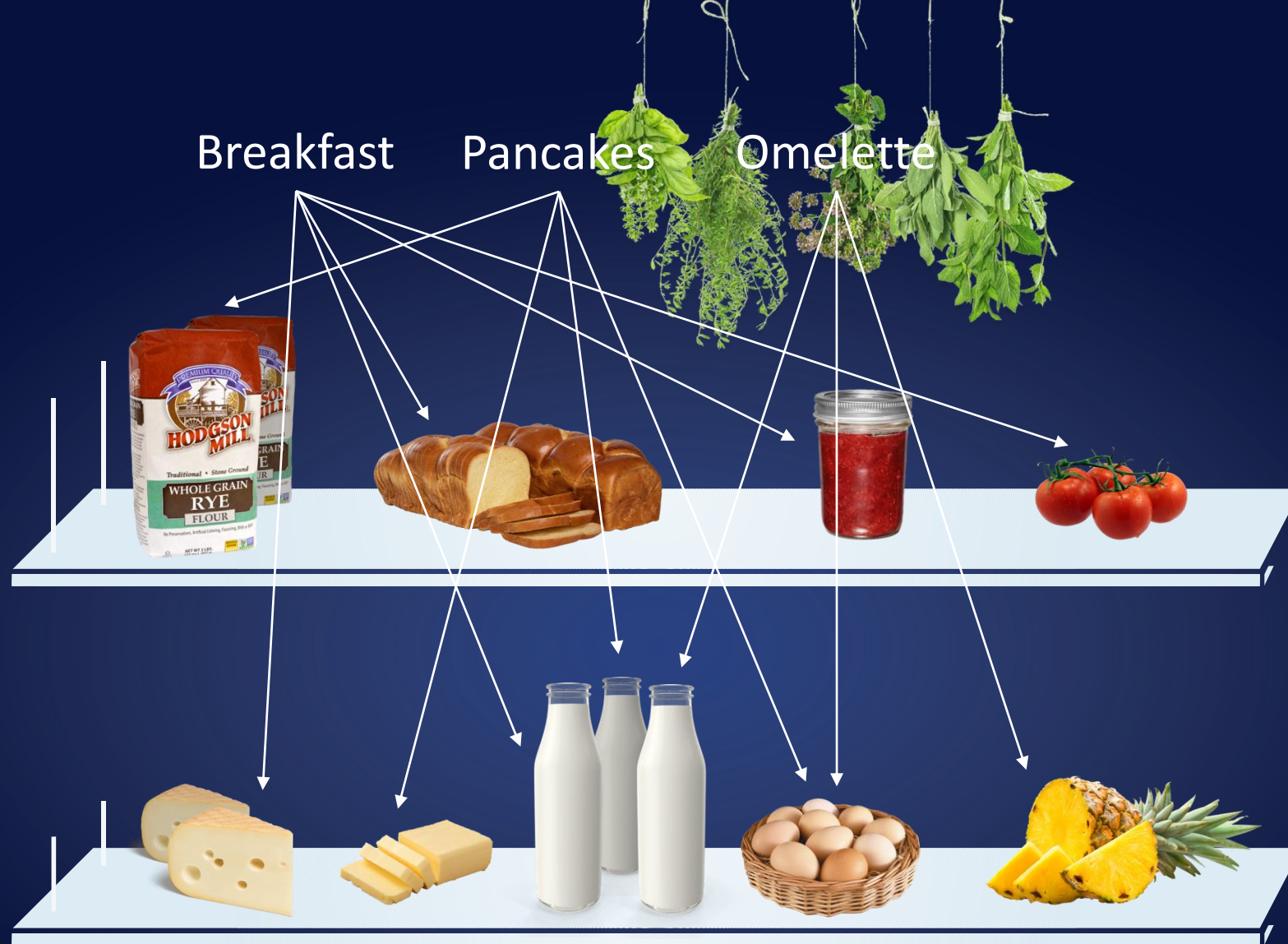
Omelette



Breakfast

Pancakes

Omelette



inorigo®
Application Builder

End User
Application



inorigo®
Model Builder

Information
Model



inorigo®
Versatile DB

Database
Model



inorigo®



3. HOW to create a DTO

- What do you need to know?
- Experiment with a Digital Twin.
- Business Experts start contributing.





Do you find this interesting?

Contact me at
tove.nilstun@ortelius.com

www.ortelius.com